



How to Online Upgrade or Local Upgrade the Uniview Device through EZTools 2.0 and EZTools 3.0?



Title	How to Online Upgrade or Local Upgrade the Uniview Device through EZTools 2.0 and EZTools 3.0?	Version:	V1.1
Product	SMB	Date	9/26/2023

How to Online Upgrade or Local Upgrade the Uniview Device through EZTools 2.0 and EZTools 3.0?

Description

Note: This method is applicable to most of the scenarios. If the method still cannot solve your problem, it is recommended to consult our Tech Support Team.

https://global.uniview.com/Support/Service_Hotline/

Preparation

Video tutorial:

https://www.youtube.com/watch?v=zCDRqWYP4n4&list=PLrBaKYrUJkiv_ShCVIqTeIAsOxyFELjJR&index=3

Note: The PC must be connected to the internet if you wish to cloud upgrade your device through EZTools 2.0 and EZTools 3.0.

Operating Steps

Device upgrade includes **local upgrade** and **online upgrade**. The upgrading progress is displayed in real time.

Local upgrade: Upgrade device(s) using an upgrade file on your computer.

Online upgrade: With Internet connection, online upgrade will check the device firmware version, download upgrade files, and upgrade the device. You need to log in first.

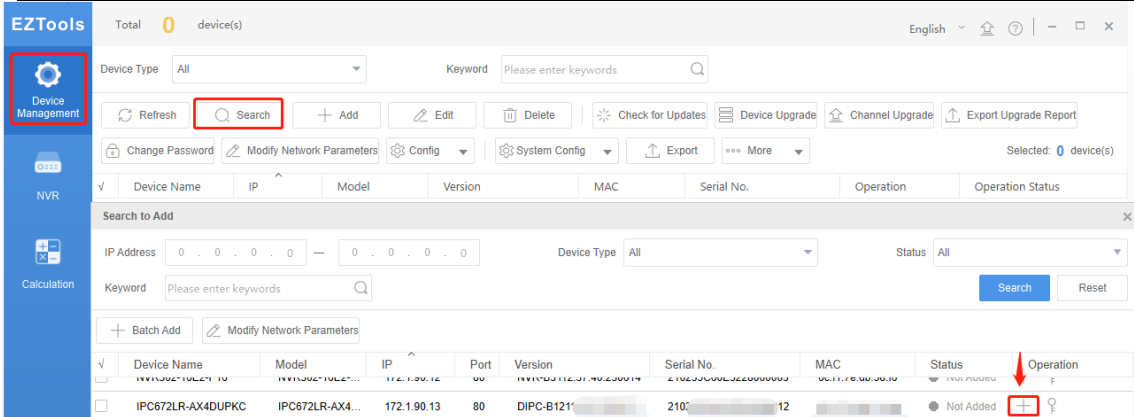
How to online upgrade your device?

Preparation: Connect your device and your PC to the same local network, then open EZTools 2.0 or EZTools 3.0 on your PC.

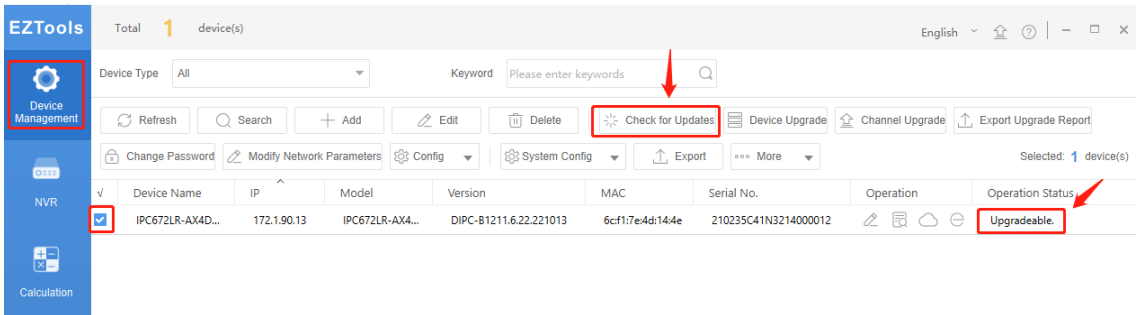
EZTools 3.0.

Step 1 Click **Search** under **Device Management** to find the device you want to upgrade, and then click **+** in the operation column to add it to management first.

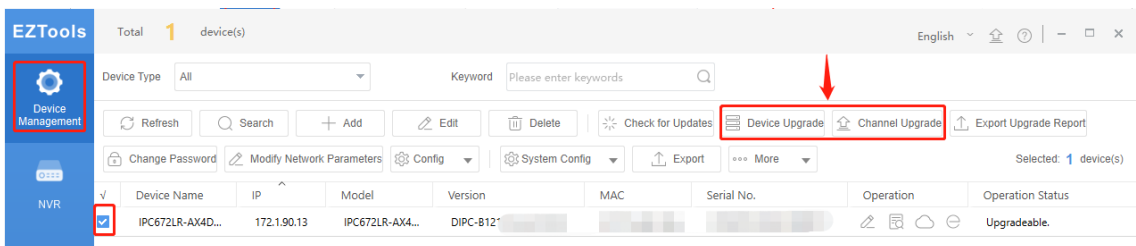
Title	How to Online Upgrade or Local Upgrade the Uniview Device through EZTools 2.0 and EZTools 3.0?	Version:	V1.1
Product	SMB	Date	9/26/2023



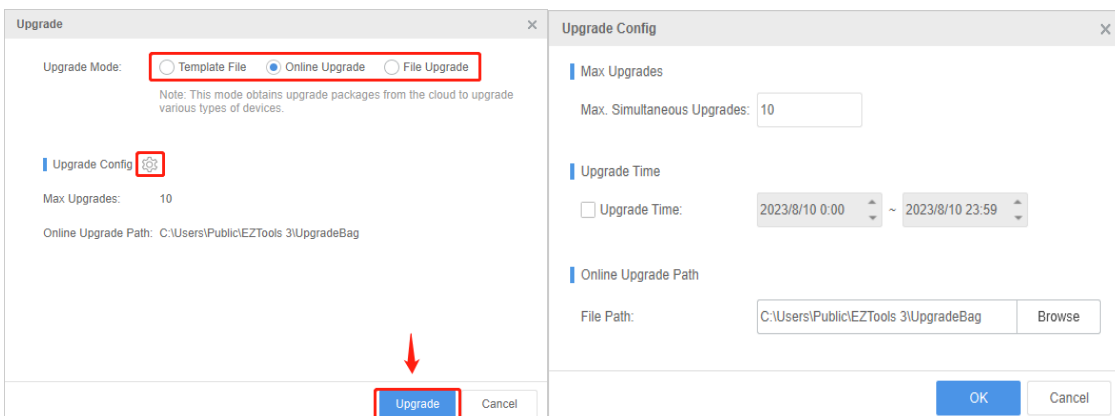
Step 2 Check the device you wish to upgrade and then click **Check for Updates** to see whether there is any new version to upgrade on the Operation Status column (Upgradeable).



Step 3 Check the device you wish to upgrade and then click **Device Upgrade** (camera) or **Channel Upgrade** (upgrade cameras on NVR).



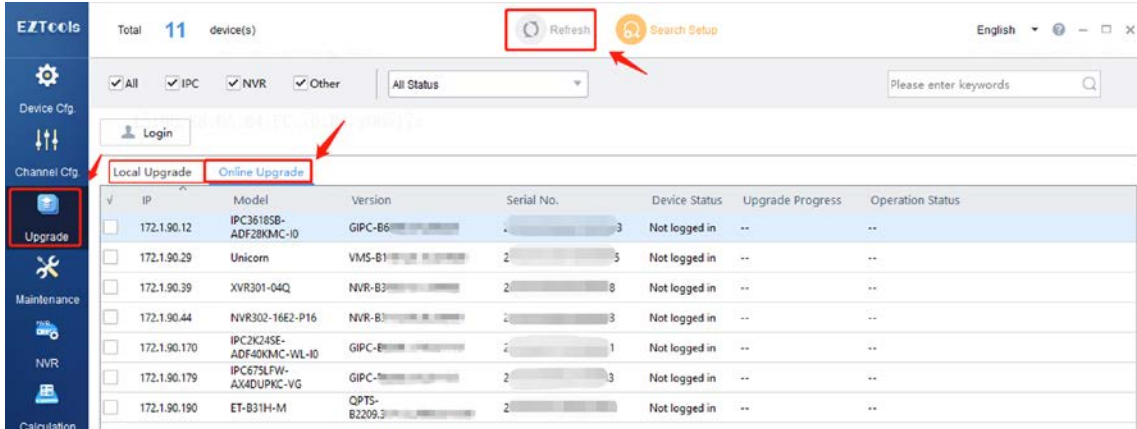
Step 4 Select the Online Upgrade under **Upgrade Mode** and set up the **Upgrade Config**. Click **Upgrade**.



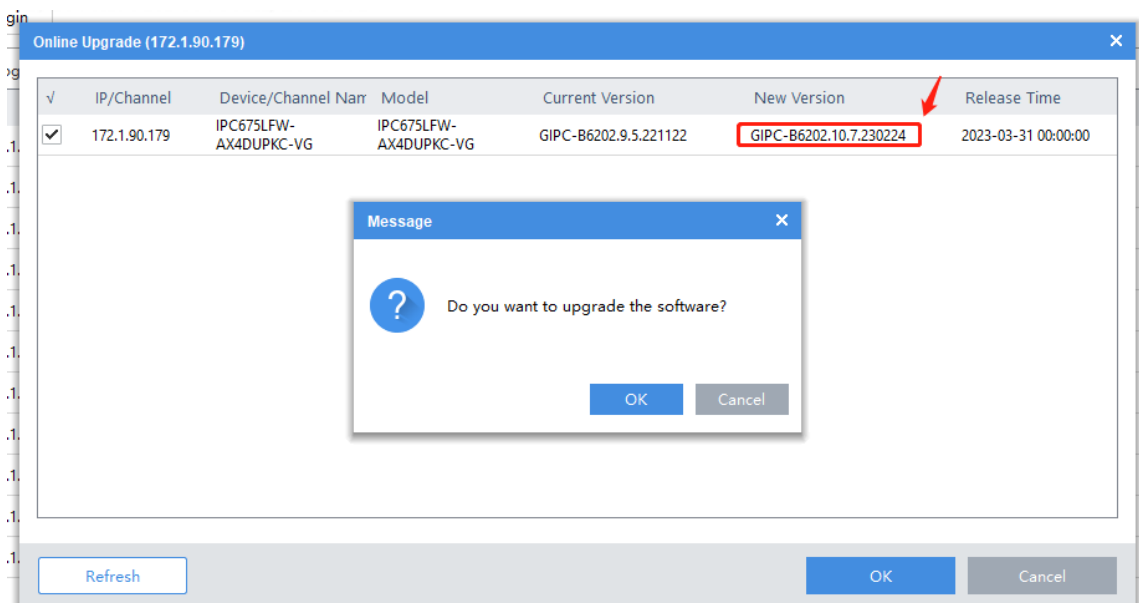
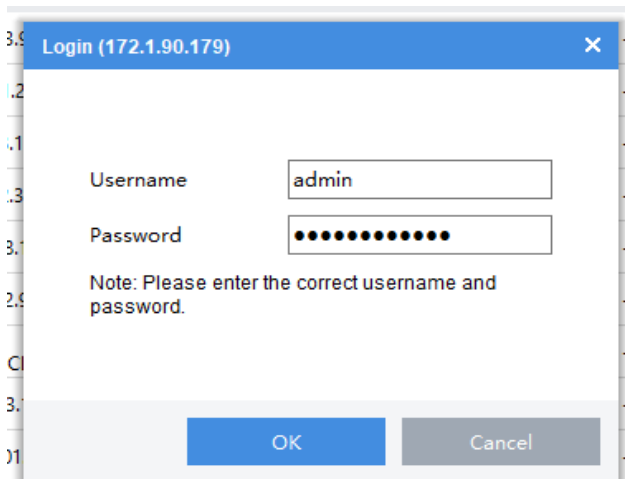
Title	How to Online Upgrade or Local Upgrade the Uniview Device through EZTools 2.0 and EZTools 3.0?	Version:	V1.1
Product	SMB	Date	9/26/2023

EZTools 2.0.

Step 1 Click **Refresh** under **Upgrade>Online Upgrade** to search for your devices.



Step 2 Once your devices have been detected, you can click **Upgrade** and then log in your device and check if there is a newer firmware for the device.



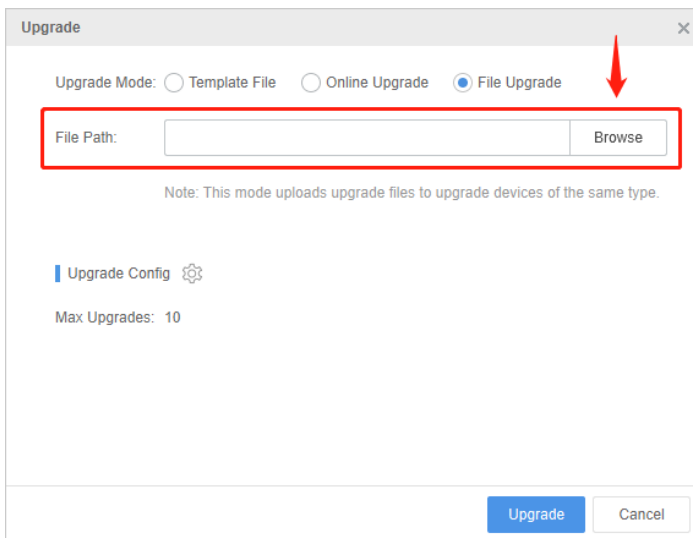
Title	How to Online Upgrade or Local Upgrade the Uniview Device through EZTools 2.0 and EZTools 3.0?	Version:	V1.1
Product	SMB	Date	9/26/2023

Step 4 Select the device you wish to upgrade and click **OK**. The online upgrade will start automatically. Wait until the upgrade progress is completed.

How to Local upgrade your device?

EZTools 3.0

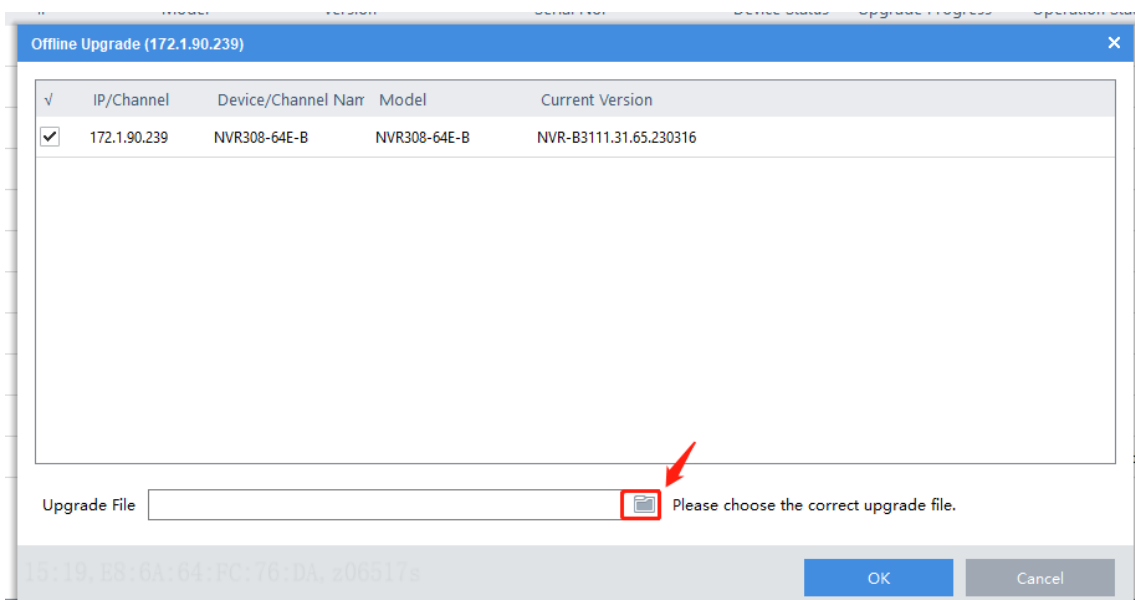
All the steps are almost the same as cloud upgrade except that you need to select **File Upgrade** under **Upgrade Mode** and set up **File Path** in advance.



Note: The firmware version file must be put in the file path and all firmware must be unzipped except firmware for cameras.

EZTools 2.0

Step 1 Click **Upgrade** on the main menu. Under **Local Upgrade**, select the device(s) and then click **Upgrade**. A dialog box is displayed (take NVR as an example).





Title	How to Online Upgrade or Local Upgrade the Uniview Device through EZTools 2.0 and EZTools 3.0?	Version:	V1.1
Product	SMB	Date	9/26/2023

Step 2 Select the upgrade version file. Click **OK**.

Note:

1. *The upgrade version must be correct for the device. Otherwise, exceptions may occur.*
2. *For an IPC, the upgrade package (ZIP file) must contain the complete upgrade files.*
3. *For an NVR, the upgrade file is in .BIN format.*
4. *You can upgrade NVR channels in batches.*
5. *Please maintain a proper power supply during the upgrade. The device will restart after the upgrade is completed.*